

Coaxial Frequency Mixer

ZLW-1

Level 7 (LO Power +7 dBm) 0.5 to 500 MHz



HT-Series
Tight Spot
SMA Wrench
From \$24.95

CASE STYLE: M21

Connectors	Model
SMA	ZLW-1
BRACKET (OPTION "B")	
BRACKET (OPTION "BR")	

Maximum Ratings

Operating Temperature	-55°C to 100°C
Storage Temperature	-55°C to 100°C
RF Power	50mW
IF Current	40mA

Permanent damage may occur if any of these limits are exceeded.

Coaxial Connections

LO	1
RF	3
IF	2

Features

- low conversion loss, 5.81 dB typ.
- high L-R isolation, 45 dB typ., L-I, 40 dB typ.
- rugged shielded case

Applications

- VHF/UHF
- defense & federal communications
- instrumentations

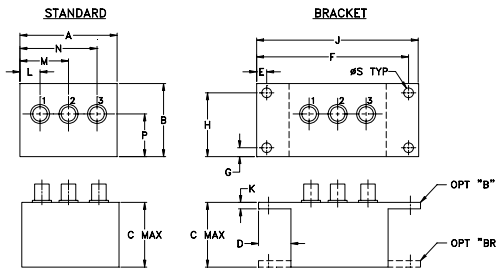
Electrical Specifications

FREQUENCY (MHz)		CONVERSION LOSS (dB)				LO-RF ISOLATION (dB)						LO-IF ISOLATION (dB)											
LO/RF	IF	Mid-Band			Total Range	L			M			U			L			M			U		
		\bar{X}	σ	Max.		Typ.	Min.	Typ.	Min.	Typ.	Min.	Typ.	Min.	Typ.	Min.	Typ.	Min.	Typ.	Min.	Typ.	Min.		
0.5-500	DC-500	5.81	0.08	7.0	8.5	50	45	45	30	35	25	45	35	40	25	30	20						

1 dB COMP.: +1 dBm typ.

L = low range [f_L to $10 f_L$] M = mid range [$10 f_L$ to $f_U/2$] U = upper range [$f_U/2$ to f_U]
m = mid band [$2f_L$ to $f_U/2$]

Outline Drawing



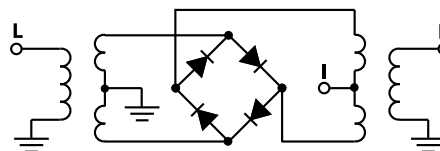
Outline Dimensions (inch/mm)

A	B	C	D	E	F	G	H
1.50	1.13	1.00	.50	.155	2.345	.138	.987
38.10	28.70	25.40	12.70	3.94	59.56	3.51	25.07
J	K	L	M	N	P	S	wt
2.50	.10	.31	.75	1.19	.66	.150	grams
63.50	2.54	7.87	19.05	30.23	16.76	3.81	40.0

Typical Performance Data

Frequency (MHz)		Conversion Loss (dB)	Isolation L-R (dB)	Isolation L-I (dB)	VSWR RF Port (:1)	VSWR LO Port (:1)
RF	LO	LO +7dBm	LO +7dBm	LO +7dBm	LO +7dBm	LO +7dBm
0.50	30.50	7.29	>67.00	>67.00	1.21	1.98
1.00	31.00	6.89	>67.00	62.73	1.03	1.93
2.00	32.00	6.49	>67.00	61.28	1.02	1.96
5.00	35.00	6.01	>67.00	60.55	1.06	1.86
10.00	40.00	5.99	>67.00	59.37	1.10	1.83
20.00	50.00	6.02	>67.00	59.08	1.13	1.87
32.73	62.73	5.96	59.27	57.92	1.15	1.88
50.00	80.00	5.91	56.01	56.08	1.19	1.91
64.95	94.95	5.87	53.83	54.11	1.23	1.91
100.00	70.00	5.81	49.90	49.45	1.29	1.92
161.63	131.63	5.84	44.60	43.60	1.35	1.91
200.00	170.00	5.99	41.47	40.82	1.42	1.99
226.08	196.08	5.95	40.62	39.96	1.49	1.99
258.31	228.31	5.89	39.44	37.84	1.56	1.99
306.65	276.65	5.99	37.26	36.42	1.65	2.03
354.99	324.99	6.23	34.94	34.34	1.74	2.16
403.33	373.33	6.32	33.70	33.77	1.81	2.20
451.66	421.66	6.68	33.66	33.23	1.93	2.27
483.89	453.89	7.17	34.17	34.46	2.00	2.25
500.00	470.00	7.25	34.51	34.41	2.03	2.26

Electrical Schematic



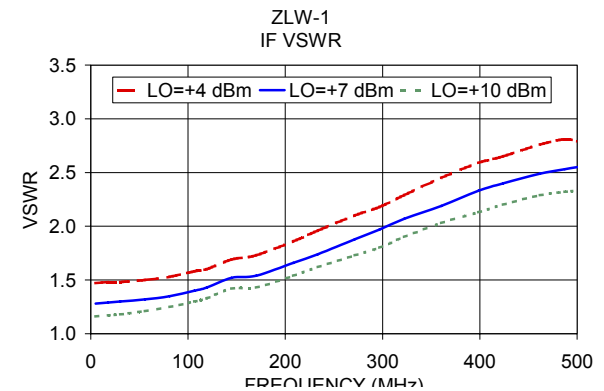
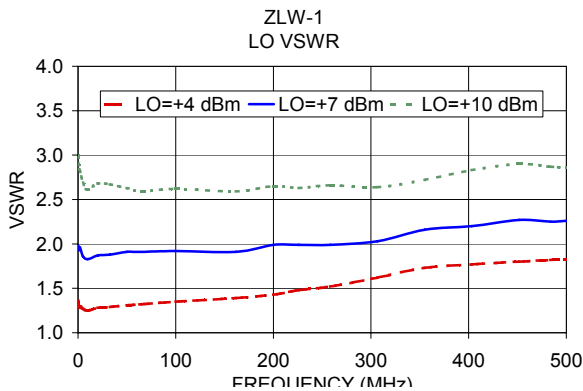
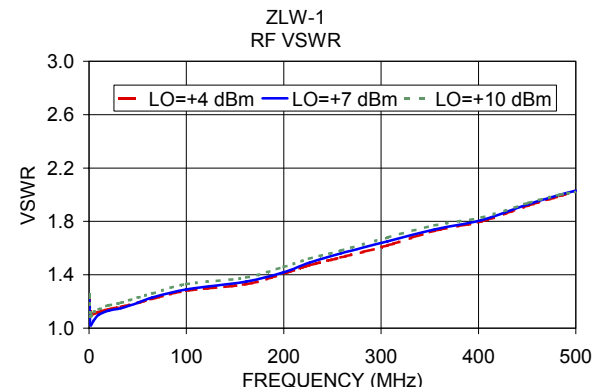
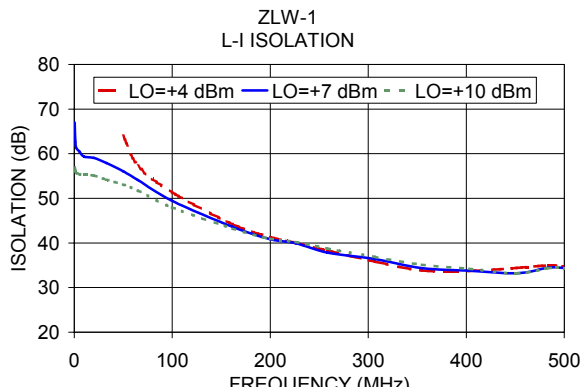
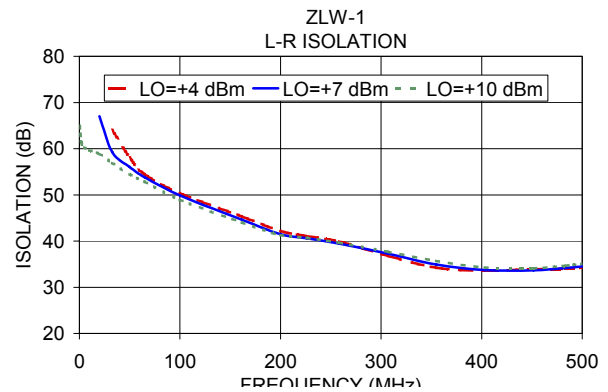
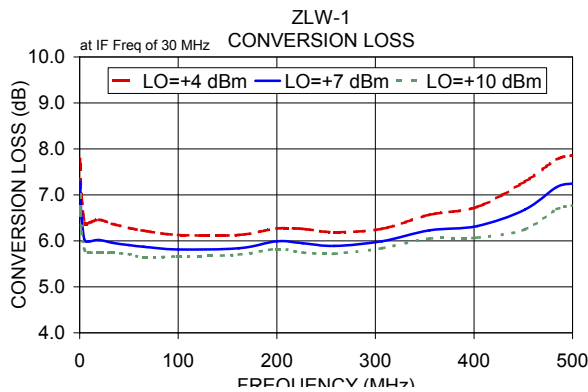
Notes

- Performance and quality attributes and conditions not expressly stated in this specification document are intended to be excluded and do not form a part of this specification document.
- Electrical specifications and performance data contained in this specification document are based on Mini-Circuit's applicable established test performance criteria and measurement instructions.
- The parts covered by this specification document are subject to Mini-Circuits standard limited warranty and terms and conditions (collectively, "Standard Terms"); Purchasers of this part are entitled to the rights and benefits contained therein. For a full statement of the Standard Terms and the exclusive rights and remedies thereunder, please visit Mini-Circuits' website at www.minicircuits.com/MCLStore/terms.jsp

Mini-Circuits

www.minicircuits.com P.O. Box 350166, Brooklyn, NY 11235-0003 (718) 934-4500 sales@minicircuits.com

REV. A
M151107
ZLW-1
DJ/TD/CP/AM
151009



Notes

- A. Performance and quality attributes and conditions not expressly stated in this specification document are intended to be excluded and do not form a part of this specification document.
- B. Electrical specifications and performance data contained in this specification document are based on Mini-Circuit's applicable established test performance criteria and measurement instructions.
- C. The parts covered by this specification document are subject to Mini-Circuits standard limited warranty and terms and conditions (collectively, "Standard Terms"); Purchasers of this part are entitled to the rights and benefits contained therein. For a full statement of the Standard Terms and the exclusive rights and remedies thereunder, please visit Mini-Circuits' website at www.minicircuits.com/MCLStore/terms.jsp

